

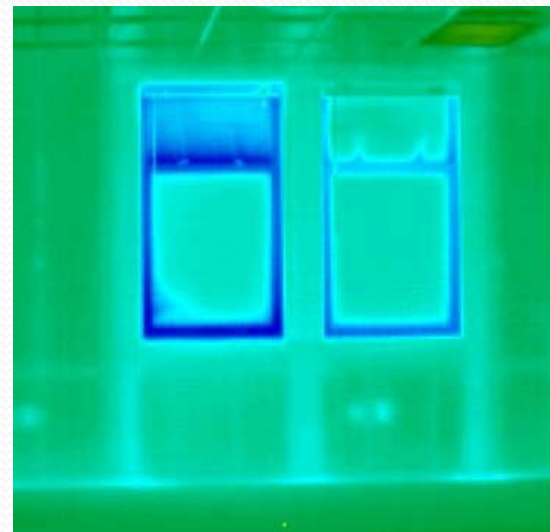
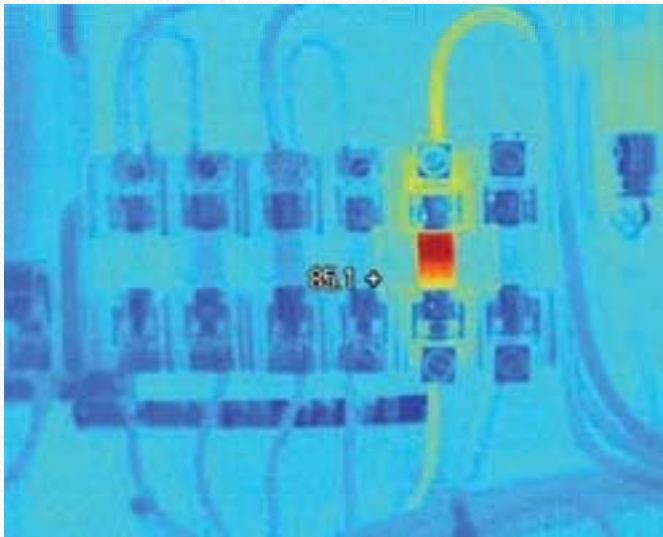
Neudorfer Engineers Inc

Thermal Imaging Applications



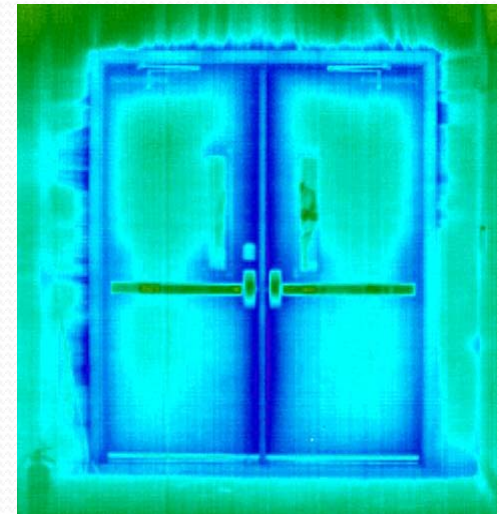
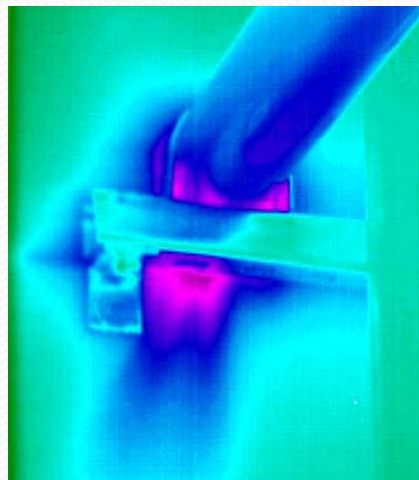
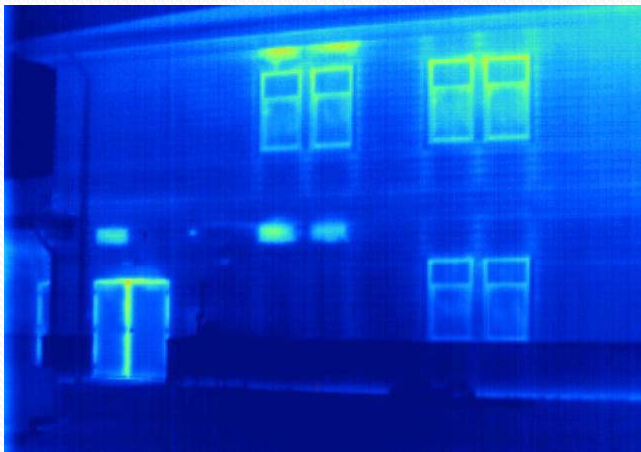
Thermal Imaging

- Thermal Imaging is an excellent tool in nondestructive testing to find anomalies in buildings, mechanical and electrical equipment.



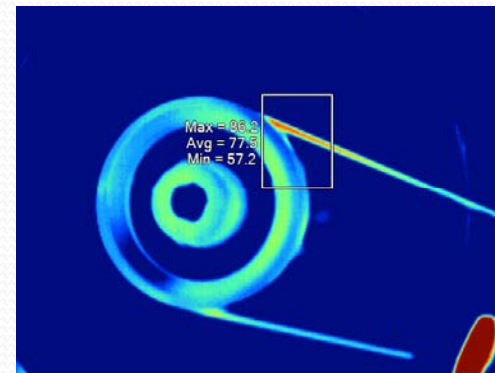
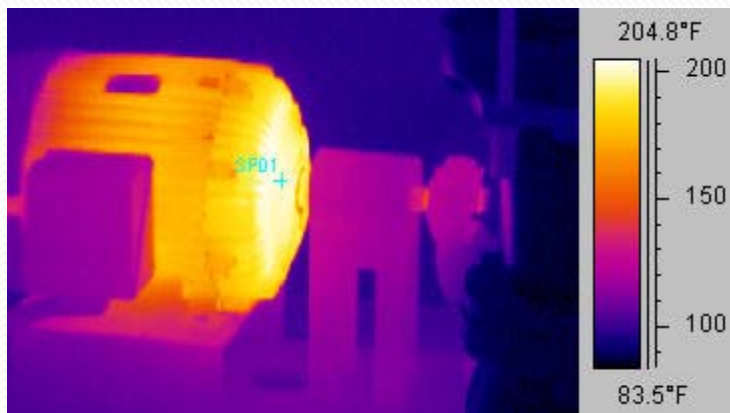
Building Applications

- In conjunction with Blower Door Testing, with the building in either a positive or negative pressure, leaks of all sizes can be detected.



Mechanical Applications

- Improper alignment will often create thermal hot spots in bearings, couplings, pumps and belts.



Electrical Applications

- Failing Equipment, poor connections and other electrical issues can be seen using a thermal imager.

